



Production



AADS production facility is dynamic and scalable, making it flexible and quick to react to the customer's needs.

Our fabrication area allows us to explore most chassis configurations. Together with our engineering resource we can redesign and rework chassis and body structures to enable an increased capability, should it be for load or space.

As part of our production line we have a fully enclosed 70 m³ sand blasting facility, which ensures all our components are prepared to the highest level before the specified surface finish is applied. This helps us ensure all our products are made to the highest quality, durable and robust.

Our paint facility relies on several open faced and closed booths, letting us cover all aspects of paint, from the small components to complete cars. We also have dedicated areas and equipment for specialist and durable surface finishes, which can be applied as underbody protection layers or as non-slip finish on critical surfaces.

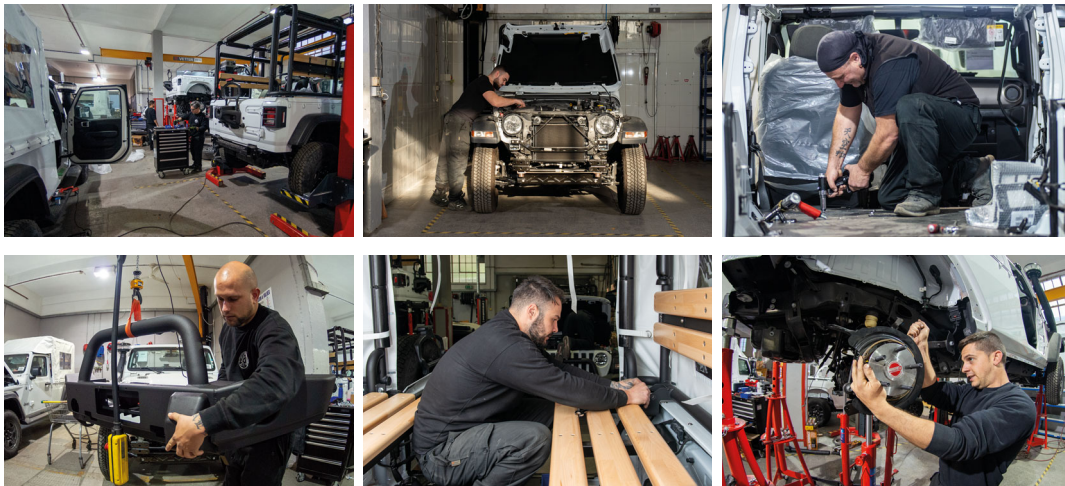




Our assembly line is manned by an experienced technical staff and can accomplish most tasks. Within this area we are able to convert suspension assemblies, change transmission systems, build custom made interiors and add any option requested by the customer.

We can adapt the assembly area from repetitive to discrete manufacturing methods depending on workload and specific requirements, ensuring we are always able to give the necessary resource to all kinds of builds, from prototyping to volume production.

Our flexible approach has allowed us to meet every challenge head on. AADs can adapt to demand and dedicate either part of a production area, or in fact it's complete production area to building multiple variants at once.



AADS

Global Distributor to
Government Organisations

PO Box 1147, First Floor, 78 Queensway, The Dockyard, Gibraltar, GX11 1AA
T: +350 22505400 / E: info@aads-gib.com / www.aads-gib.com